

# Rim Drive that works.

Electric propulsion systems are the best fit  
for your vessel.



RIM DRIVE TECHNOLOGY

  
**Ramamarine**



# // INTRODUCTION: ABOUT THE COMPANIES

## **Rim Drive Technology**

Rim Drive Technology is a Dutch company who produces 100% electric motors between 0.5kW and 75kW. The motors are used in private boats, subsea, and commercial/industry applications, both as main propulsion and secondary drives.

In addition to motors, Rim Drive Technology provides a wide range of customizable complementary products, including batteries, monitors, throttle controls, motor controllers, and cables.

## **Powering the Future together**

Rim Drive Technology and Rama Marine have partnered to combine Dutch innovation with Italian engineering excellence. Rama Marine is the official distributor of Rim Drive Technology in Italy, Switzerland, and Liechtenstein.

## **Rama Marine**

Rama Marine is the division of RAMA S.p.A. dedicated to the marine industry. The company is renowned for its decades of expertise in marine and industrial power systems. Building on this strong foundation, Rama Marine continues its technical excellence and passion for innovation for the marine market.

Rama Marine is the official distributor in Italy and other European countries of some of the best international brands in this industry. It provides its customers not only with reliable, high-performance products, but also with technical expertise and specialized support for all installation, customization and maintenance requirements.

# Rim Drive

## Discover all advantages

---



### **Acceleration response**

An immediate acceleration response in comparison with conventional solutions.

### **No central shaft**

No central shaft keeps ropes and nets from snagging the propeller.

### **Limited maintenance**

Only one rotating part which reduce the amount of maintenance.

### **Compact and lightweight**

A compact and lightweight design makes our products compatible for the smallest installation.

### **Stepless controlling**

Because of the stepless controlling our rim drive motors can be operated proportionally.

# // **10 REASONS:** TO CHOOSE FOR A RIM DRIVE

Discover the key advantages of choosing a Rim Drive motor. From quiet operation to low maintenance, here are 10 reasons why you should choose our electric rim drive for your vessel.

## **1. SILENT OPERATION**

---

Rim drive motors operate with very low noise, offering a peaceful cruising experience, ideal for the serene environment, such as navigating in harbors.

## **2. SHAFTLESS DESIGN**

---

No center shaft limits the chance that ropes, plants, or fishing nets will get stuck in the propeller.

## **3. LESS SPARE PARTS**

---

By having only one rotating part, there are few spare parts necessary. No oils and sealings required.

## **4. HIGH RELIABILITY**

---

High reliability due to simplified design and limited number of parts.

## **5. ECO-FRIENDLY SOLUTION**

The fully electric Rim Drive motor support sustainable boating and help comply with stricter environmental regulations.

## **7. HIGH MANEUVERABILITY**

Steerable motors or our Dynamic Positioning System enable simple and precise control and help your vessel to manoeuvre smoothly in tight spaces.

## **9. COMPACT & LIGHTWEIGHT**

The compact, integrated nature of rim drive motors saves valuable space in the motorcompartment, ideal for any type of vessel.

## **6. OPERATIONAL RUNTIME**

Reduced downtime due to no maintenance and no replacement of service components.

## **8. LIMITED MAINTENANCE**

Our motor cast in Epoxy without oils and sealings, having only one rotating part reduces the amount of maintenance needed.

## **10. EASY INSTALLATION**

The ease of our plug-and-play motors and systems, saving time and effort for you as a boat builder.

# // CONFIGURATIONS: PROPULSION

## POD



Power range: 0.5kW - 75kW

---

The better alternative for an inboard motor.

## Steerable PODs



Power range: 2.5kW - 75kW / 2.5kW - 75kW

---

320 degrees propulsive power for ultimate maneuverability.

## Outboards



Power range: 2.5kW - 22kW / 11kW - 15kW

---

Different outboard solutions for your application.

# // CONFIGURATIONS: BOW THRUSTERS

## Standard thruster



Power range: 0.5kW - 75kW

---

The best solution for your own construction.

## Tunnel set

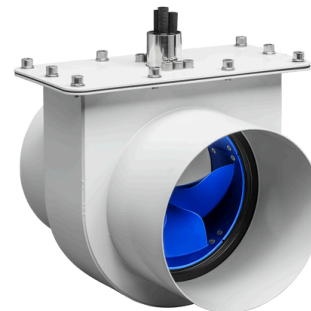


Power range: 0.5kW - 75kW

---

A strong stainless steel provides a robust solution for bow thrusters.

## Bow thruster box



Power range: 2.5kW - 75kW

---

The bow thruster box makes it easy to access the motor. Available in a variety of materials: glass fiber, aluminum, HDPE and steel.

# // ACCESSORIES: TOTAL SYSTEM

Throttle controls

Single- Top



Single- Side



Double- Standard



Double - Display



Thruster control



Steerable POD joystick



12V batteries

12V 60Ah



12V 100Ah



12V 200Ah



48V batteries

48V 60Ah



48V 100Ah



48V 200Ah



Smart solutions

Smart steering system



Glendinning joystick



Dynamic Positioning System



Chargers

48V 2000W



48V 3300W



Displays

Display 5"



Display 7"



Display 9"



Cables

Main power set



Safety kit set







# Get In Touch

## Drive electric

[www.rimdrivetechology.nl](http://www.rimdrivetechology.nl)



**RIM DRIVE TECHNOLOGY**

  
**Ramamarine**

+39 0522.930711  
[marine@rama.it](mailto:marine@rama.it)  
[www.ramamarine.it](http://www.ramamarine.it)