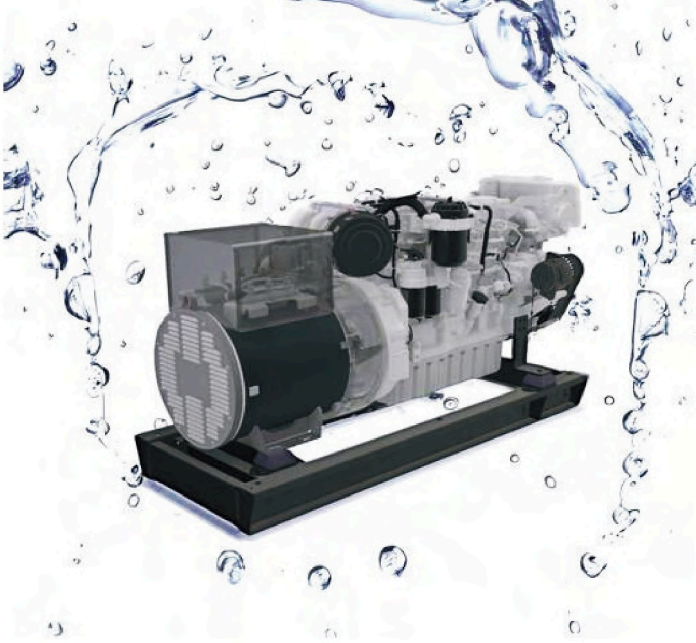


# MARINE GENERATORS

Diesel Engine Ratings



**SEA ENERGY**



TECHNOLOGY

RELIABILITY

ROBUSTNESS

DURABILITY

*The solution for on board  
energy supply*



# CONTENT

THE HEART OF SEA ENERGY..... 4

HISTORY..... 5

REFERENCES.....6

ABOUT US.....7

INNOVATION TAILORED TO THE USER.....9

RELIABILITY TESTED ON THE BENCH.....9

MARINE CLASSIFICATION SOCIETIES.....10

WE MEET NEEDS OF THE USER AND PLANET...11

DIMENSION AND WEIGHTS.....12

ENGINE IDENTIFICATION.....13

MARINE GENERATORS MODELS. 50Hz/1500  
rpm.....14

MARINE GENERATORS MODELS. 60Hz/1800  
rpm.....15

WORLDWIDE LOCATIONS.....16



# THE HEART OF SEA ENERGY

SEA ENERGY has chosen John Deere engines for the composition of the generator set. This choice is simply due to the high reliability of the engine, designed for applications requiring constant power and high load percentages, along with the durability needed in a marine application.

**TDMED** has been one of the largest distributors of John Deere Power Systems in the EMEA region since 1994 and, **as an engineering firm specializing in propulsion and on-site power generation**, knows the heart of its generator sets like no other. Thanks to direct contact with the factory for the definition and configuration of its components, TDMED manages to offer highly competitive SEA ENERGY generators that are practical.

We permanently stock over 100 John Deere marine engines in our warehouses in Madrid and a wide variety of alternators (Stamford, Leroy Somer, and Mecc Alte among others) for customized and agile supply.

Similarly, we have generator sets of various configurations available for immediate delivery.



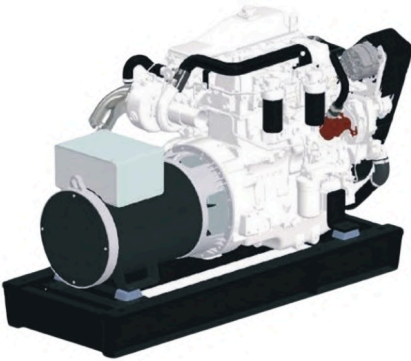
# HISTORY

**TDMED POWER SYSTEMS**, formerly known as Transdiesel, was founded in 1987 and is part of the Casli Group. It began as a distributor in Spain for diesel and gas engines and automatic gearboxes. Its continuous expansion led it to become an engineering firm specializing in propulsion and on-site electrical generation. The company is now present in Spain, Turkey, Portugal, Algeria, Morocco, Mauritania, and active throughout the Mediterranean region. Since 2024, we have expanded in South America.



# REFERENCES

The SEA ENERGY generators and JOHN DEERE engines have been installed on a large number of vessels, shipyards, and countries. Contact us via email, and we can provide you with references for similar boats in your area.



# ABOUT US

Designed for all types of vessels, the generators are manufactured with the most precision and customization.

We have several types, particularly the Yachting range, which are equipped with a soundproofing to achieve the necessary noise reduction (dB) on board.

They offer excellent soundproofing and can be adapted to the client's needs based on the available space in the engine room. The cabin is modular, with removable panels for easy access to the vessel.



# ABOUT US



## SEA ENERGY COMMERCIAL

Without soundproof cabin, designed for practical operation on work boats, fishing vessels, merchant ships, or tugboats.

The reliability of the components mounted by TDMED must shine now more than ever.



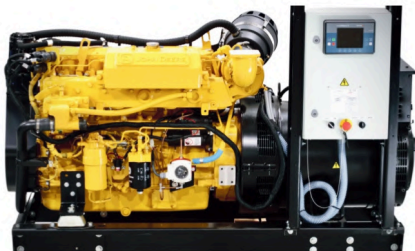
# INNOVATION TAILORED TO THE USER

Driven by a passion for improving our equipment, we want our SEA ENERGY to be accessible to everyone, **from shipyard technical managers to experienced captains**. Our team designs solutions by gathering input from vessel operators and builders so that their advice enables us to create the generator they seek.

Customers can use standard models as reference, but SEA ENERGY generators are customized, manufactured, and modified in the factory according to the client's requirements.

## RELIABILITY TESTED ON THE BENCH

All SEA ENERGY marine generators undergo rigorous quality testing on our generator endurance test bench, which can reach up to 1,000 kWe.



# MARINE CLASSIFICATION SOCIETIES

The generators feature corrosion and vibration protection to keep the controller, engine, and alternator safe from marine environmental conditions and strong vibrations.

We always use original parts, and our consumable accessories are specifically designed to keep the SEA ENERGY generator operating at peak performance.

Additionally, we offer the possibility of Bureau Veritas, Lloyd's Register, RINA, ABS, DNV-GL certification at our facilities.



- Engines comply with international European (IMO tier II) and United States (EPA tier III) emissions standards.
- Sea Energy also offers engines for the non-regulated regions around the world



# WE MEET NEEDS OF THE USER AND PLANET

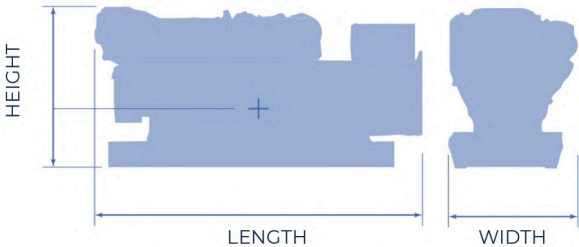


Using Selective Catalytic Reduction (SCR), we offer a wide range of marine generator sets that comply with IMO Tier III / EPA Tier IV emissions standards. We also provide various engine options that meet the requirements of EU Stage V Marine.

We supply our generator sets with other integrated exhaust gas aftertreatment systems such as Diesel Particulate Filters (DPF). We offer configurations with DPF/SCR combinations, depending on the specific requirements of each case and aiming for the greatest simplicity to comply with emissions legislation and its requirements.



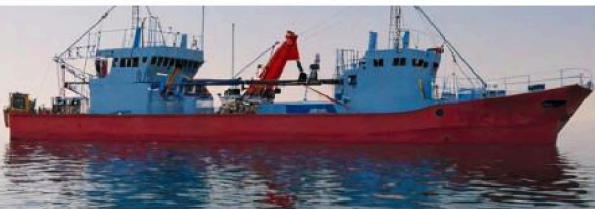
# DIMENSIONS AND WEIGHTS



Genset dimensions and weights listed in this guide use the following variables:

- **Length (mm)** = length of complete genset (rear face to extreme of alternator).
- **Width (mm)** = width of bench.
- **Height (mm)** = Bottom to highest point of genset.
- **Weight (kg)** = with oil, no coolant – include engine, alternator, steel bench and accessories.

Dimensions may vary according to option selected and depends on the project.



# MARINE GENERATORS MODELS

## 50Hz/1500 rpm

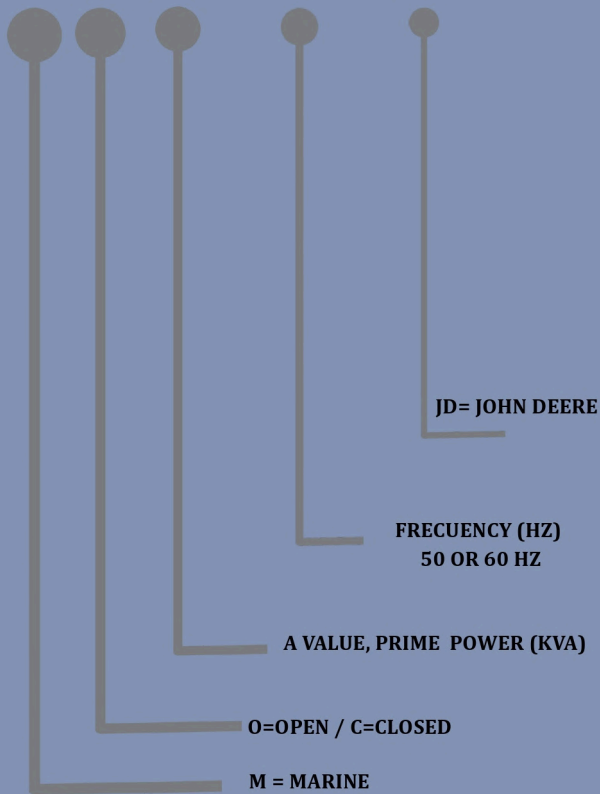
MODEL	ENGINE	EMISSIONS		PRIME POWER	STAND BY PRIME
		IMO	EPA		
MO40-50JD	3029TFG20	EXEMPT	-	40 kVA	44 kVA
MO45-50JD	4045DFM70	EXEMPT	-	45 kVA	50 kVA
MO65-50JD	4045TFM50	EXEMPT	-	64 kVA	70 kVA
MO70-50JD	4045TFM85	EXEMPT	TIER 3	69 kVA	76 kVA
MO101-50JD	4045AFM85	EXEMPT	TIER 3	102 kVA	112 kVA
MO100-50JD	6068TFM50	EXEMPT	-	102 kVA	112 kVA
MO130-50JD	6068AFM85	EXEMPT	TIER 3	133 kVA	146 kVA
MO145-50JD	6068AFM85	EXEMPT	-	146 kVA	160 kVA
MO160-50JD	6068AFM85	TIER 2	-	160 kVA	176 kVA
MO190-50JD	6068SFM85	TIER 2	-	188 kVA	207 kVA
MO220-50JD	6090AFM85	TIER 2	-	218 kVA	240 kVA
MO250-50JD	6090SFM85	TIER 2	-	250 kVA	257 kVA
MO-415JD	JD14P	TIER 2	-	416 kVA	458 kVA
MO550-50JD	JD18P	TIER 2	-	556 kVA	612 kVA

***EXISTE LA POSIBILIDAD DE QUE SEA CERRADO  
(MC = MARINE CLOSED)***



# GENSET IDENTIFICATION

**MO/C[X]-(50/60)JD**



## *Model designation key*

A SEA ENERGY marine generator model designated as MO250-60JD is a Marine Open 250kVA at 60Hz John Deere .

# MARINE GENERATORS MODELS

## 60Hz/1800 rpm

MODEL	ENGINE	EMISSIONS		PRIME POWER	STAND BY PRIME
		IMO	EPA		
MO45-60JD	3029TFG20	EXEMPT	-	45 kVA	50 kVA
MO50-60JD	4045DFM70	EXEMPT	-	50 kVA	55 kVA
MO80-60JD	4045TFM50	EXEMPT	-	80 kVA	88 kVA
MO81-60JD	4045TFM85	EXEMPT	TIER 3	81 kVA	89 kVA
MO121-60JD	4045AFM85	EXEMPT	TIER 3	124 kVA	136 kVA
MO120-60JD	6068TFM50	EXEMPT	-	124 kVA	136 kVA
MO145-60JD	6068AFM85	EXEMPT	TIER 3	146 kVA	160 kVA
MO190-60JD	6068AFM85	TIER 2	TIER 3	188 kVA	207 kVA
MO220-60JD	6068SFM85	TIER 2	TIER 3	218 kVA	240 kVA
MO250-60JD	6090AFM85	TIER 2	TIER 3	250 kVA	257 kVA
MO310-60JD	6090SFM85	TIER 2	TIER 3	313 kVA	344 kVA
MO425-60JD	JD14P	TIER 2	TIER 3	428 kVA	471 kVA
MO600-60JD	JD18P	TIER 2	TIER 3	689 kVA	758 kVA

***\*WE OFFER GENSET CANOPIED (MC = MARINE CLOSED)***



# WORLDWIDE LOCATIONS



SEA ENERGY ensures close after-sales service through its workshops in Spain, Portugal, and Turkey, as well as its network of over 40 official service centers, a network it has been developing for over 35 years.

In addition to this guarantee, SEA ENERGY generators are supported by the official John Deere service network, the largest in the world in our sector, with 3,700 service points spread across all five continents.





# SEA ENERGY

This literature has been compiled for worldwide circulation. While general information, pictures and descriptions are provided, some illustrations and text may include finance, credit, insurance, product options and accessories NOT AVAILABLE in all regions. PLEASE CONTACT YOUR LOCAL DEALER OR DISTRIBUTORS, AS APPLICABLE, FOR DETAILS. Seaenergy reserves the right to change specification, design and price of the products described in this literature without notice.



## **Ramamarine**

**Divisione di RAMA S.p.A.**

Via Agnoletti, 8 - 42124 Reggio Emilia

Tel. +39 0522 930711

*marine@rama.it* - ***www.ramamarine.it***

BROSEN/MA112025

